

Assessment

in the Primary Years Programme

Summary

Assessment is an ongoing process of gathering, analysing, reflecting and acting on evidence of student learning to inform teaching.

Assessment involves teachers and students collaborating to monitor, document, measure, report and adjust learning.

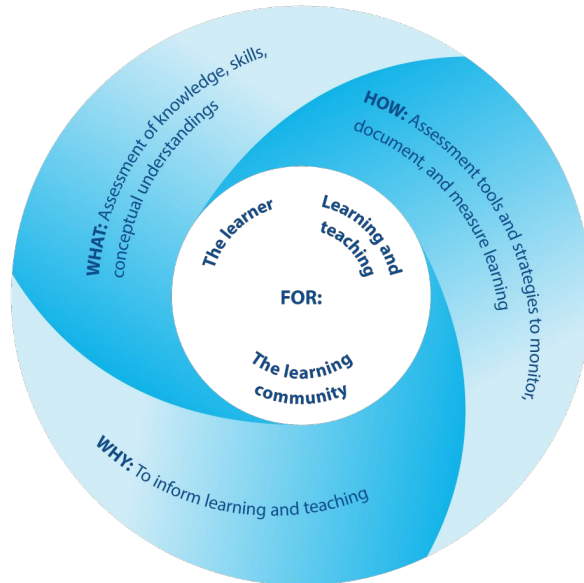
Students actively engage in assessing and reflecting on their learning, acting on feedback from peers and teachers to feed forward to next steps in learning.

Fostering an assessment culture involves the development of assessment capability among all members of the learning community.

Learning goals and success criteria are co-constructed and clearly communicated

Both learning outcomes and the learning process are assessed.

Assessment design is both backward and forward looking.



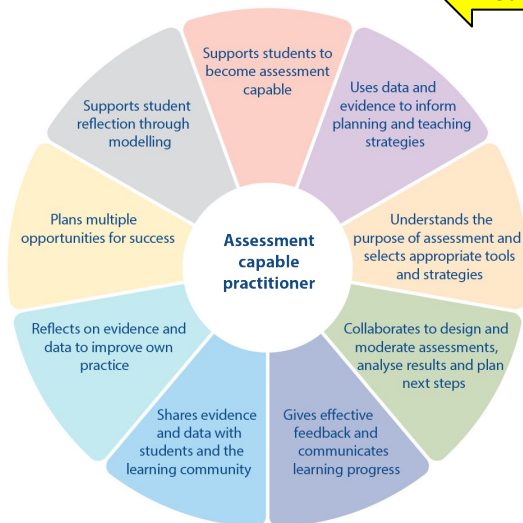
Characteristics of Effective Assessment

- Authentic
- Clear and Specific
- Varied
- Developmental
- Collaborative
- Interactive
- Feedback to Feedforward

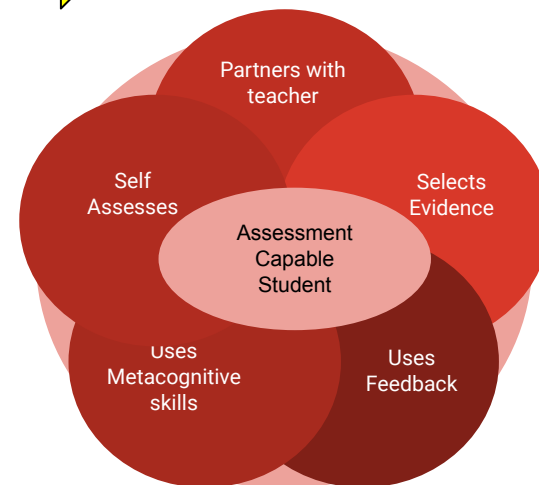
Strategies that Support Conceptual Understanding

- Wait Time
- Concept Maps
- Exit Cards
- Bus Stop Strategies
- Think in Pairs or Small Groups
- Open-Ended Questions

Teacher



Student



Assessment
is
Collaborative